

**STAR LAKE**

H9CT1 APT RETAIL

**FOR  
LEASING**

Hotline: 1800.0003  
0976.950.003



# H9CT1 APT OVERVIEW

Land Area: **24,775 m<sup>2</sup>**

Construction Ratio: **31.21%**

Total Floor Area: **112, 817.44 m<sup>2</sup>**

Floors: **24 floors (2 basement)**

Apartment numbers: **603 units**

Commercial lots: **69 units**

No of Parking: **938 (motobike 1,200)**



## POTENTIAL COMMERCIAL PODIUM

**H9CT1 Starlake Apartment building** – the only apartment complex of Starlake Phase 1 with 69 commercial lots serving 603 luxury apartments and nearly 600 starlake villa residents.

The residents have **moved in nearly 100%**

Currently, the starlake project is in the **TOP highest class project in Hanoi**, which also means that group of residents are within **the top income in Hanoi**



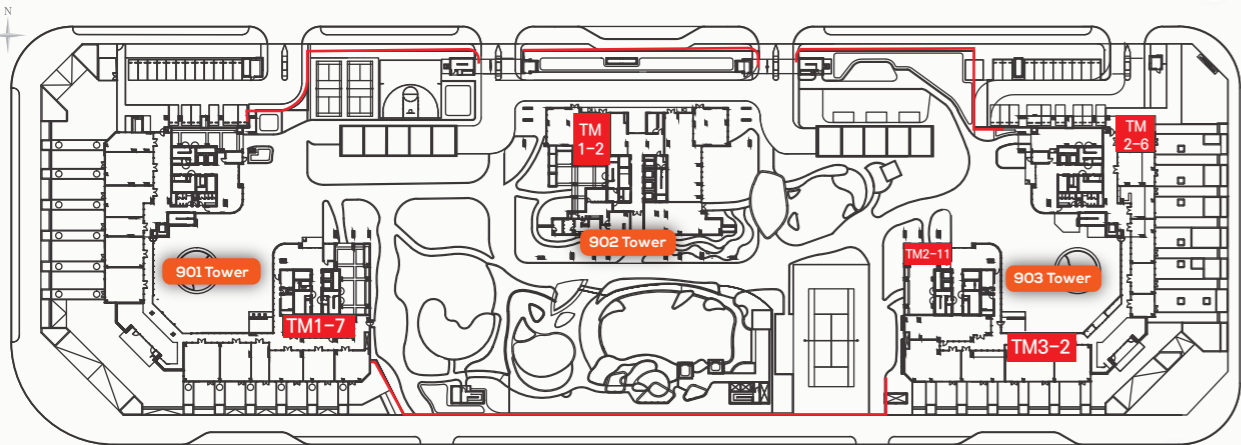
Adjacent to Starlake apartment building is Nghia Do new Urban Area **with more than 1000 apartments but almost no retail facilities serving residents**, this is also a very potential market

Opportunity to **rent directly from Starlake Developer with reasonable rental prices** for Business Owners.

# H9CT1 APT RETAIL

## OVERVIEW

Retail	901 Building	902 Building	903 Building	Sum (m <sup>2</sup> )
1 <sup>st</sup>	853.94 m <sup>2</sup>	395.74 m <sup>2</sup>	779.51 m <sup>2</sup>	2,029.19 m <sup>2</sup>
2 <sup>nd</sup>	1,287.6 m <sup>2</sup>	–	1,146.65 m <sup>2</sup>	2,434.25 m <sup>2</sup>
3 <sup>rd</sup>	452.04 m <sup>2</sup>	161.03m <sup>2</sup>	524.06 m <sup>2</sup>	1,137.13 m <sup>2</sup>
Sum	2,593.58 m <sup>2</sup>	556.77 m <sup>2</sup>	2,450.22 m <sup>2</sup>	5,600.57 m <sup>2</sup>



Hotline: 1800.0003  
0976.950.003

Retail	901 Building	902 Building	903 Building
1 <sup>st</sup>	TM1-7 (86.6 m <sup>2</sup> )	TM1-2 (89.9 m <sup>2</sup> )	
2 <sup>nd</sup>			TM2-11 (57.4 m <sup>2</sup> ) TM2-10 (46.78 m <sup>2</sup> ) TM2-13 (154.2 m <sup>2</sup> )
3 <sup>rd</sup>			TM3-2 (207.9 m <sup>2</sup> )

*FOR*  
*LEASING*

# AMENITIES AT STARLAKE H9CT1

Current retail utility services available in Starlake Apartment project are partly meeting the daily life of the Residents: Supermarket, Hair salon, Laundry, Nail care, Coffee Shops...



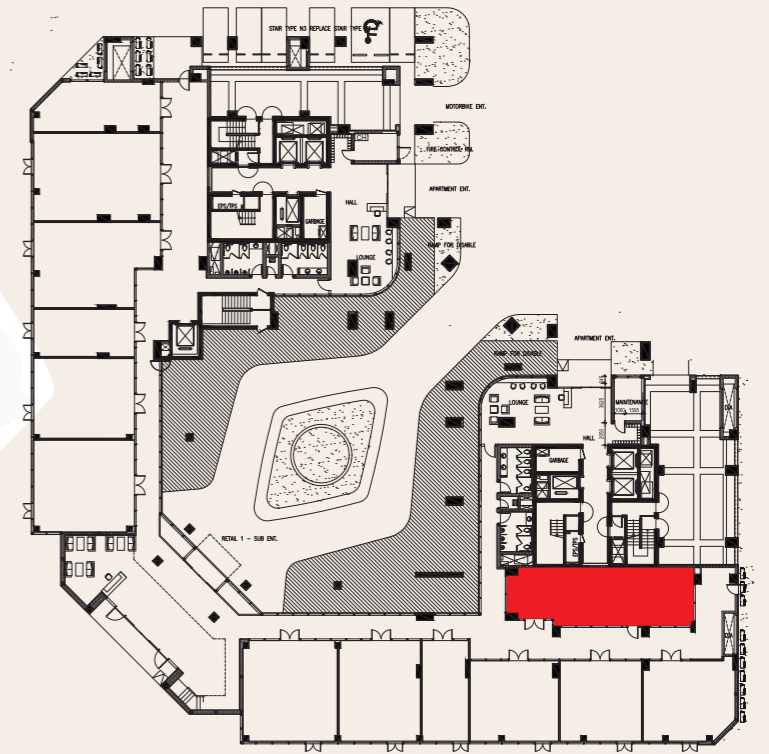
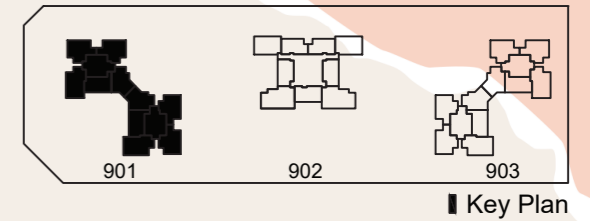
Some premium services for wealthy residents: Golf Club, Stem Cell FSCB, High-class Health Care...



H9CT1 APT Retail

**901B / TM1-7 / 86.6m<sup>2</sup> /**

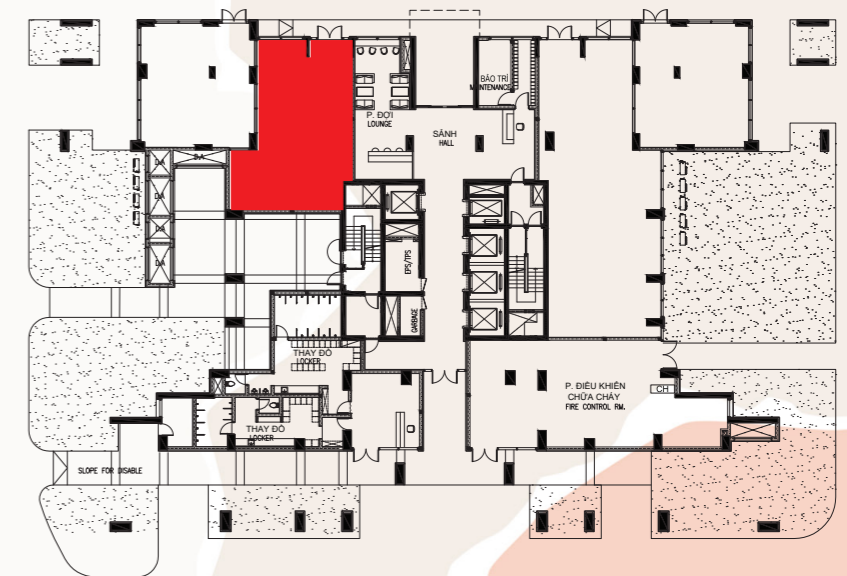
- Right on the 1<sup>st</sup> floor
- Convenient for resident access
- Long façade, easy for fitting



1 KHỐI 901 - MẶT BẰNG TẦNG 1  
BLOCK 901-1ST FLOOR PLAN

902 / TM1-2 / 89.9m<sup>2</sup> /

- 
- 901                      902                      903
- Key Plan

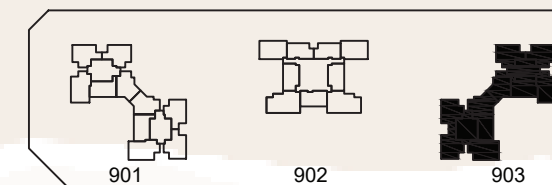


**1** KHỐI 902 - MẶT BẰNG TẦNG 1  
BLOCK 902-1ST FLOOR PLAN

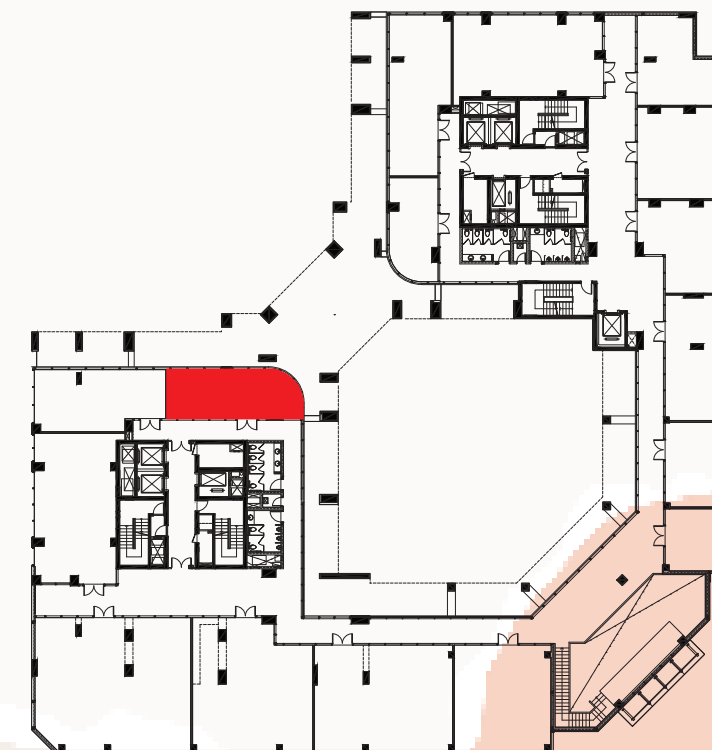
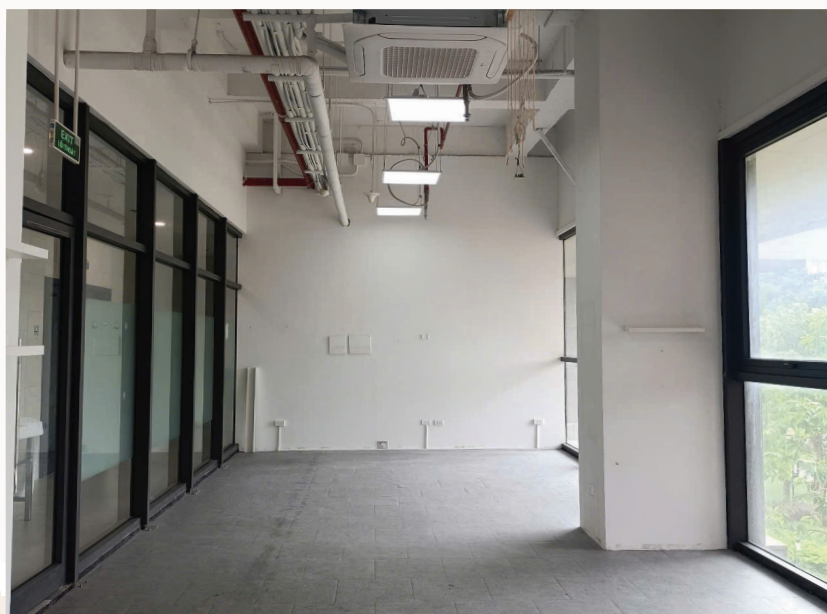
H9CT1 APT Retail

**903A / TM2-10 / 46.78m<sup>2</sup> /**

- The unit has two large glass sides, bringing in fresh air and plenty of natural light
- Located on a corner & near the elevator area, easy to attract and serve customers



Key Plan

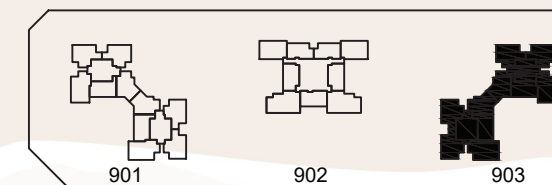


② KHỐI 903 - MẶT BẰNG TẦNG 2  
BLOCK 903-2nd FLOOR PLAN

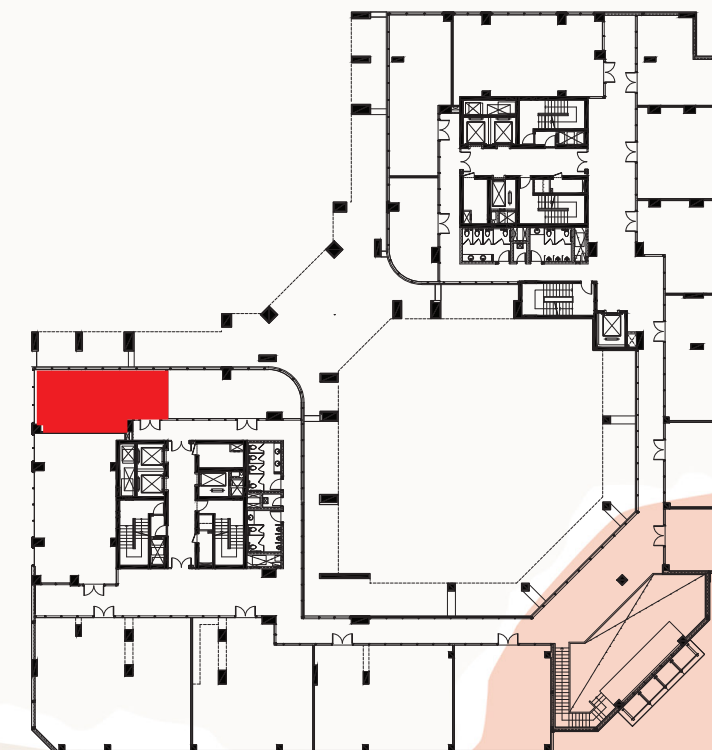
H9CT1 APT Retail

**903A / TM2-11 / 57.35m<sup>2</sup> /**

- Corner and moderate area size
- Landscape view, good recognition from Apartment & Villa residents



■ Key Plan

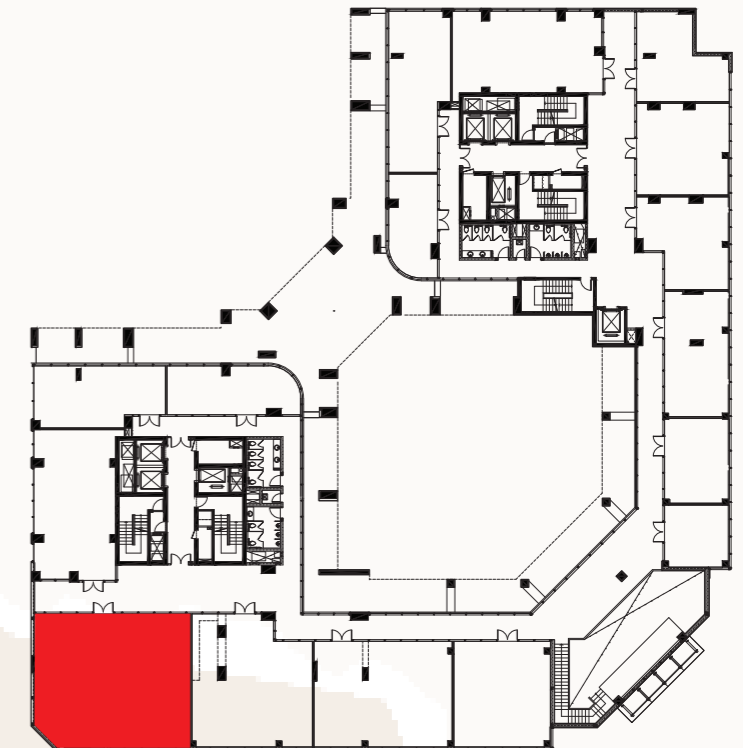
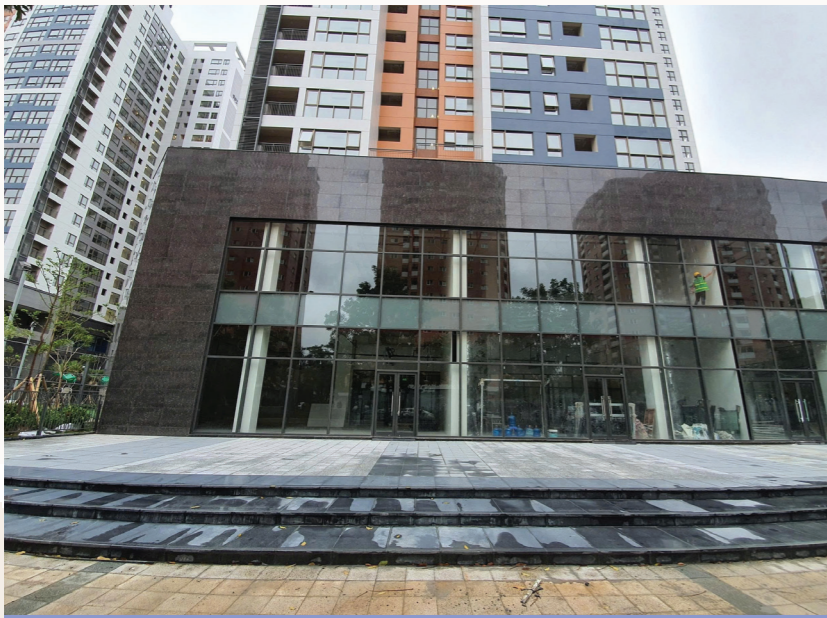
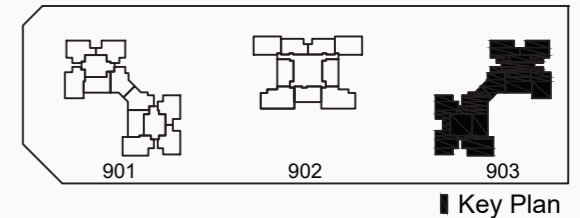


② KHỐI 903 - MẶT BẰNG TẦNG 2  
BLOCK 903-2nd FLOOR PLAN

H9CT1 APT Retail

## 903A / TM2-13 / 154.15m<sup>2</sup> /

- Corner position with stunning views of the upscale villa community
- Designed with two large glass facades, abundant natural light
- Perfect for a professional office or premium service business...



H9CT1 APT Retail

**903B / TM3-2 / 207.89m<sup>2</sup> /**

- Corner located, good layout, easy for fitting
- Good recognition from the main gate of Apartment and villa residents
- Suitable professional beauty care services, spa, Pilates...

